



Sara Valentini
www.liverrac.it

Sliding glass doors and
room dividers

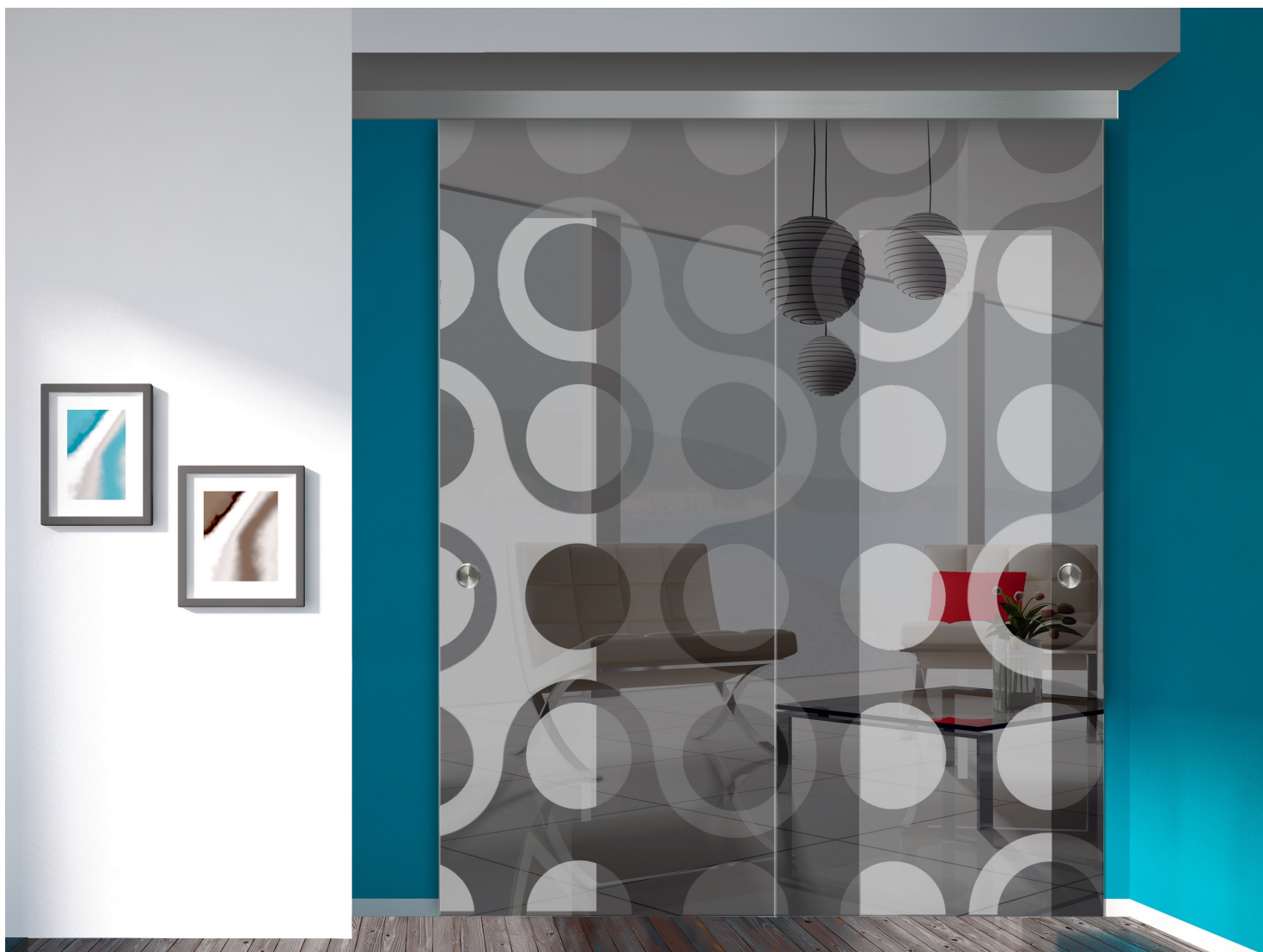


Crystalia Glass

CGS 200

SOFTPRO[®]

 **CRYSTALIA GLASS**
architectural glass & metal



| Quality Certificate | Details | | | |
|------------------------|--|---------------------|------------------------|--------------------|
| UNE EN 1527 Categories | Durability 6 | Door Weight 242 lbs | Corrosion resistance 3 | Type of door Glass |
| Durability | 100.000 cycles | | | |
| Corrosion | Grade 3 Suitable for humid environments | | | |

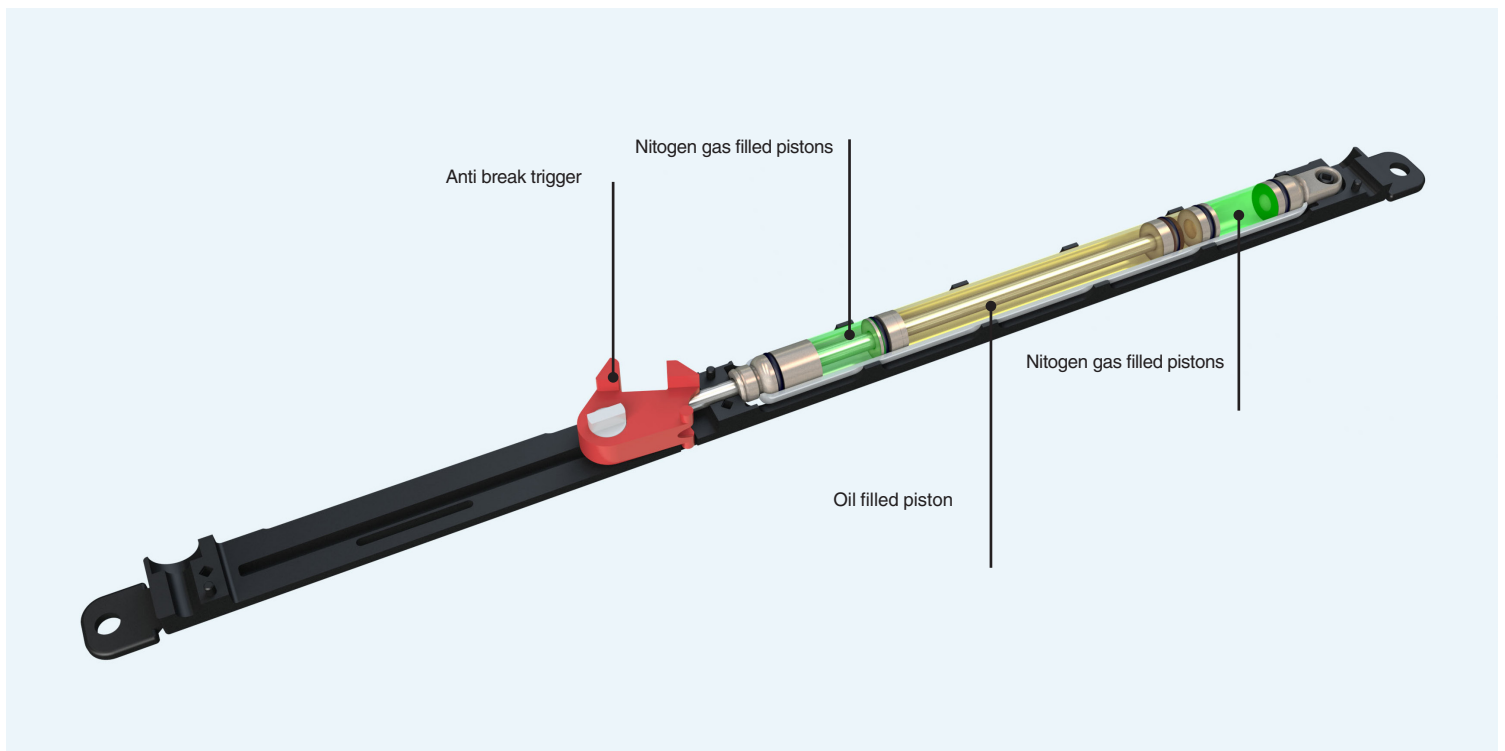


IN PROCESS

SOFTPRO[®]

The new soft-closing technology

Progressive soft closing of the last 65 mm of the doors travel into the fully closed position for doors up to a maximum of 242 lbs.

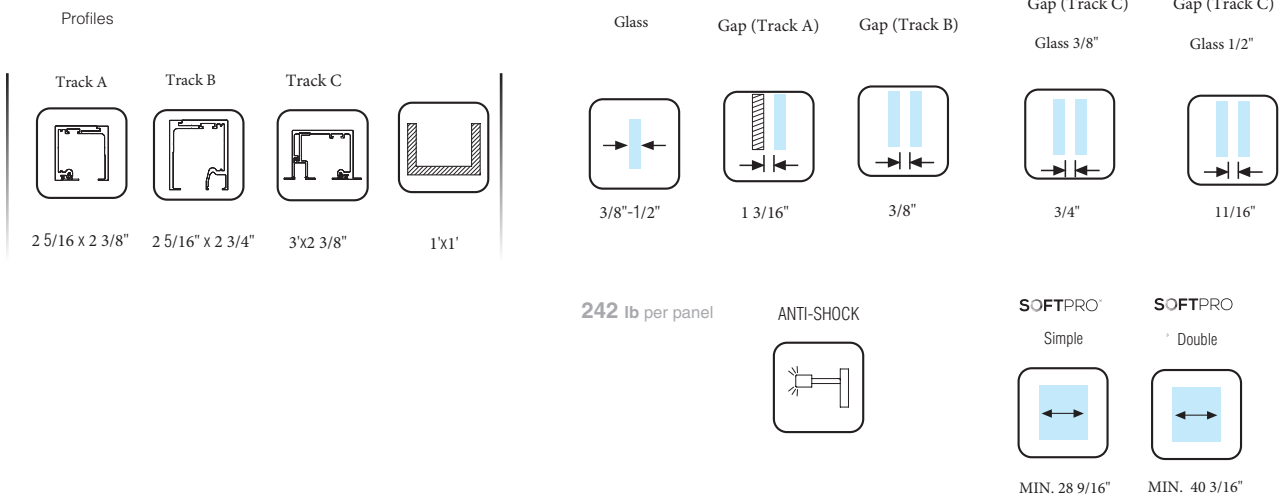


SOFTPRO[®] The new soft-closing technology from CRYSTALIA which combines two nitrogen gas filled pistons and one oil filled piston all within the same unit.

·Features:

- Closing action is **PROGRESSIVE** and slows down as the door approaches the fully closed position
- Soft Closing
- Anti break feature on the trigger
- Ensures safe braking and prevents bouncing of the door
- Ensures the door is braked **SAFELY**
- Ensures the door is held firmly in the closed position
- Combines an aesthetically pleasing action with safe soft closing for doors up to 242 lbs

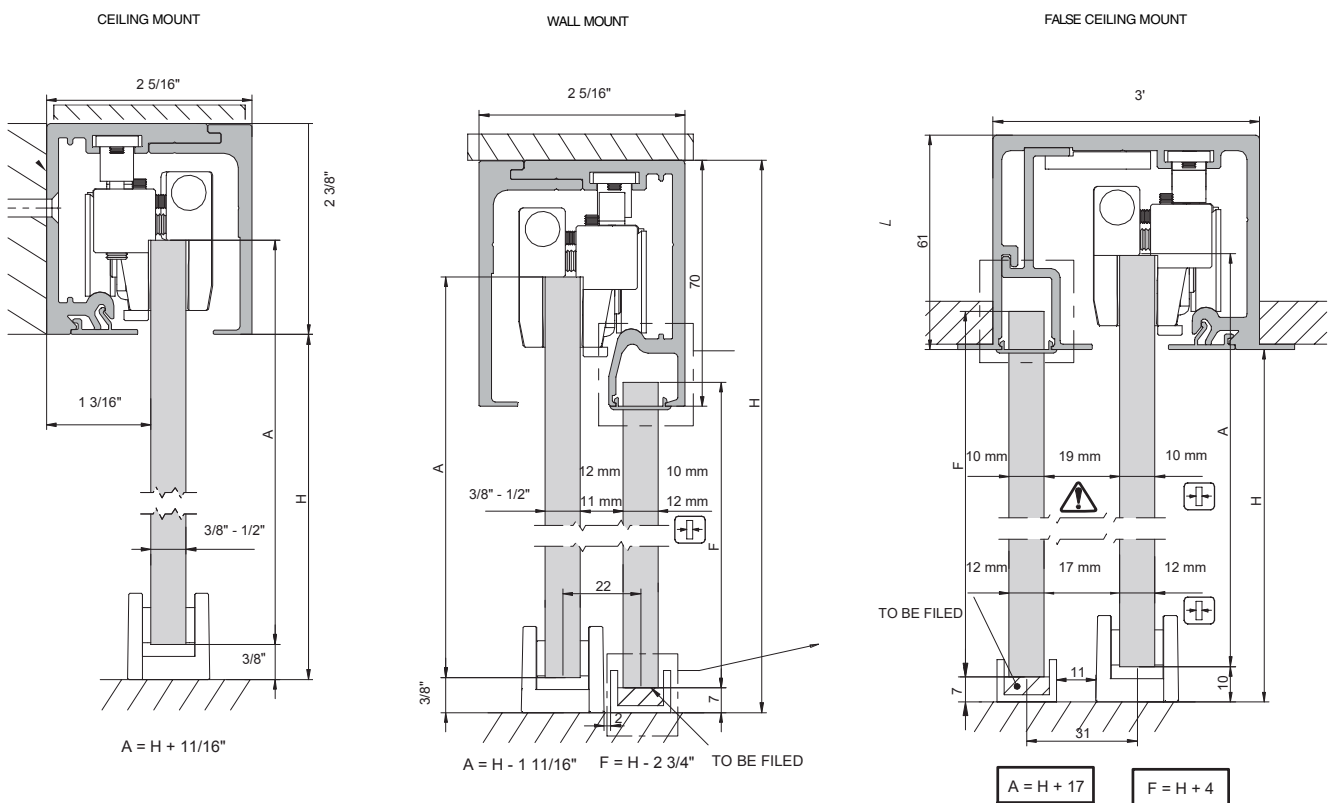
Technical characteristics



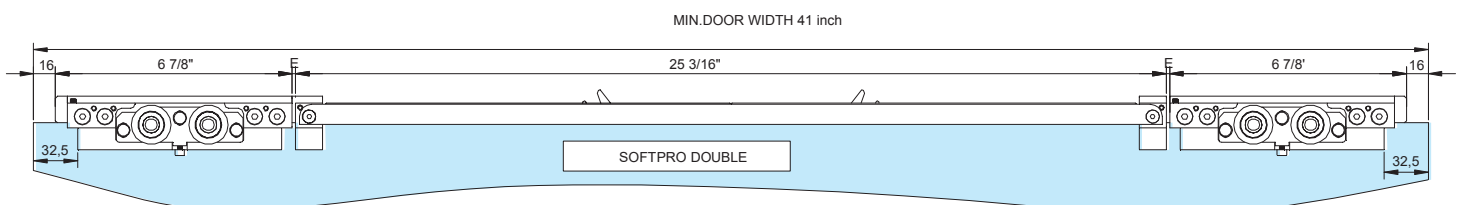
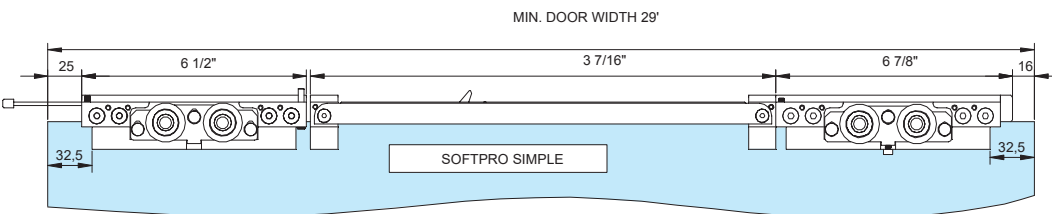
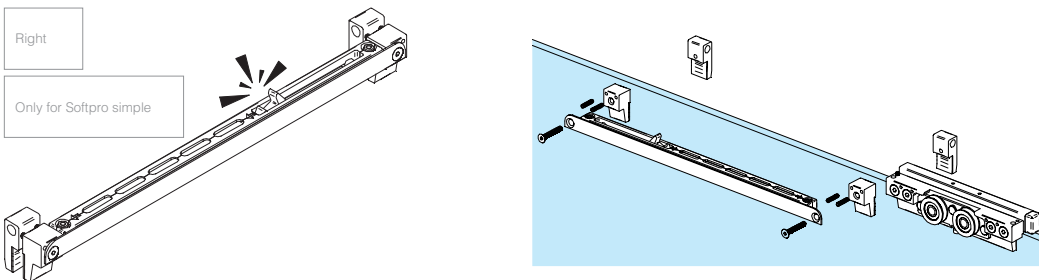
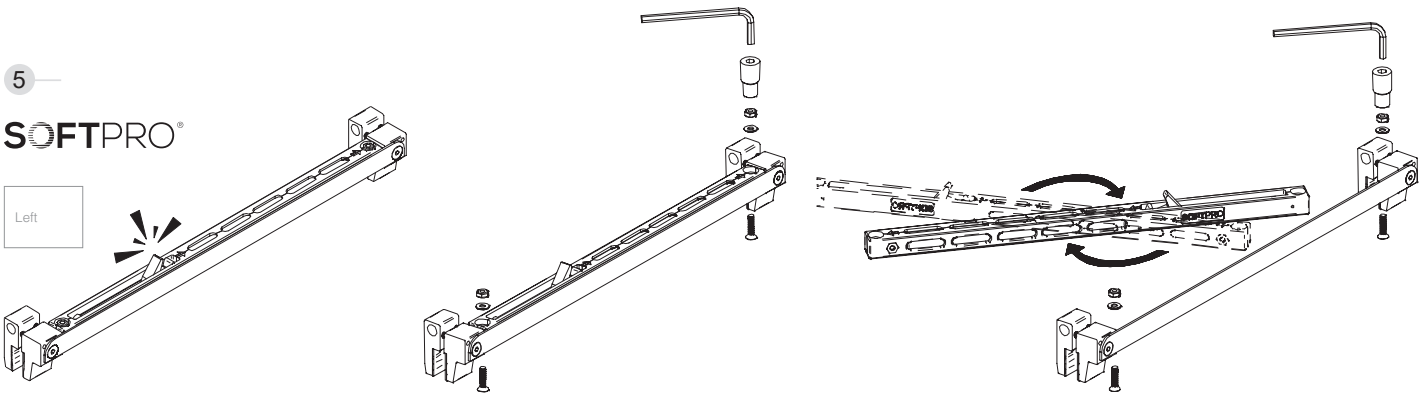
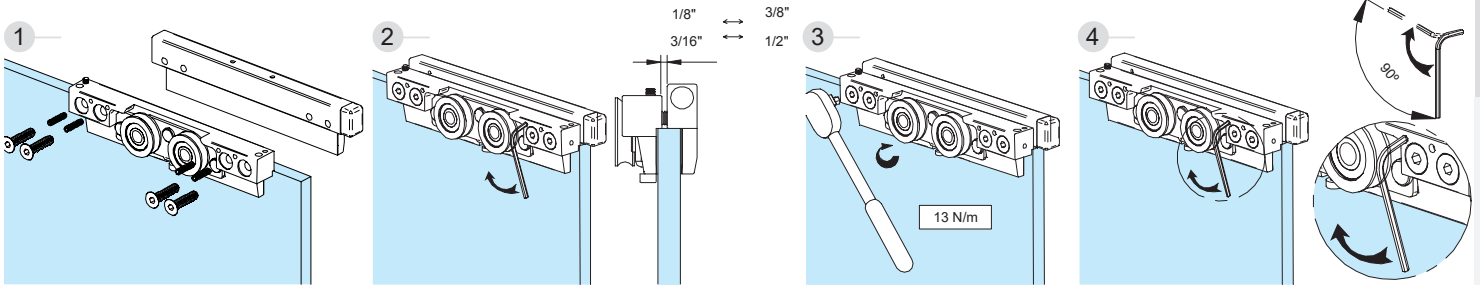
Installation possibilities



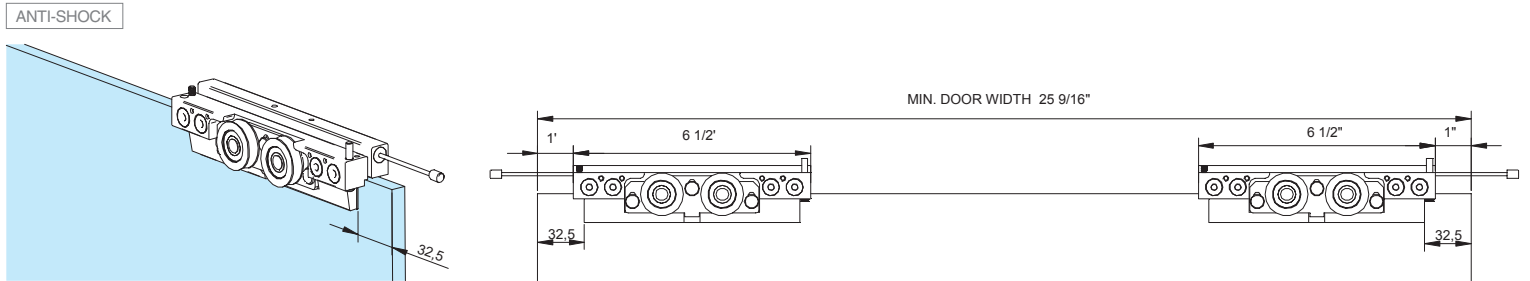
CGS 200



System Assembly

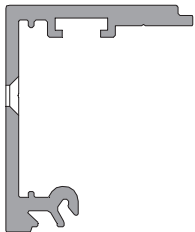


System Assembly

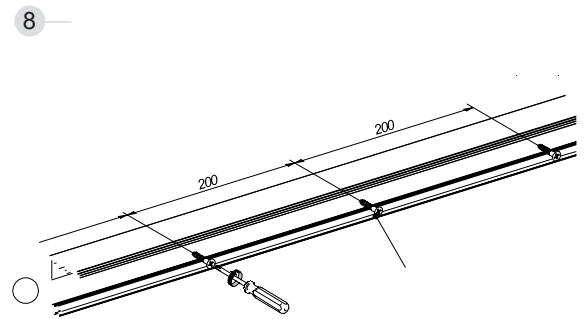
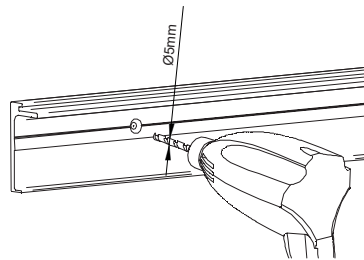


WALL MOUNT

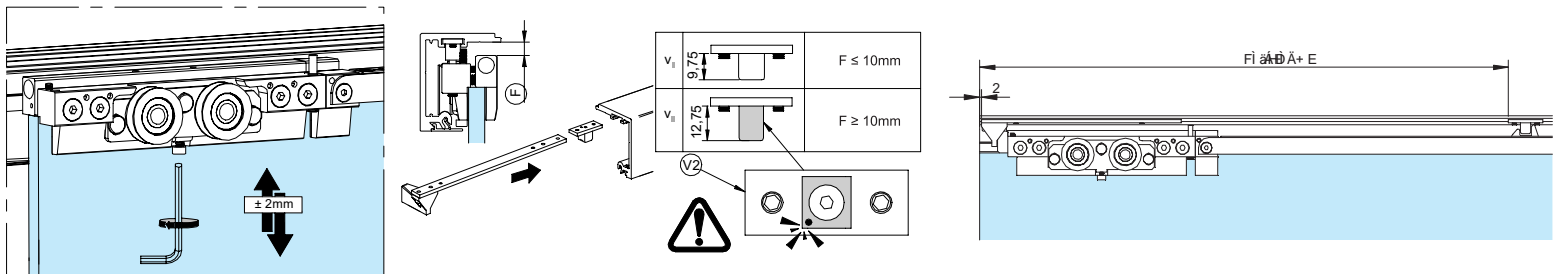
6 WALL MOUNT



7 PRE-DRILLING

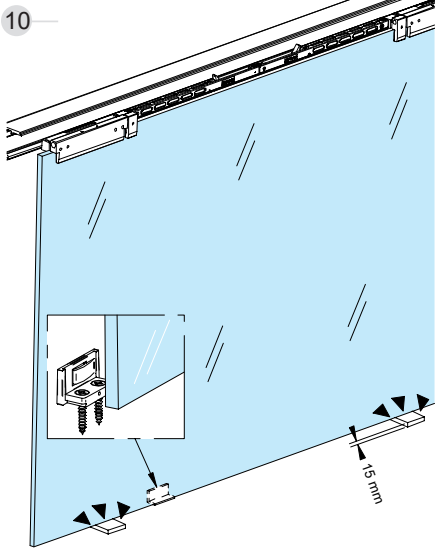
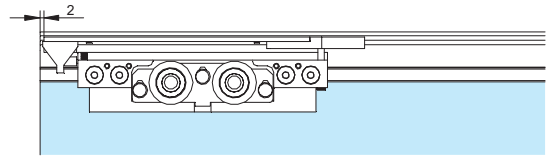
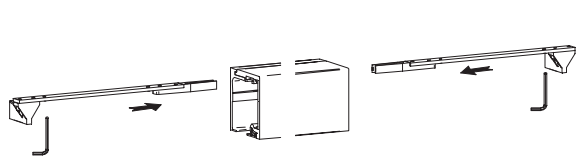


9 SOFTPRO®



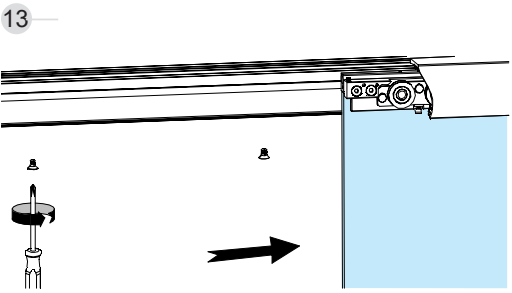
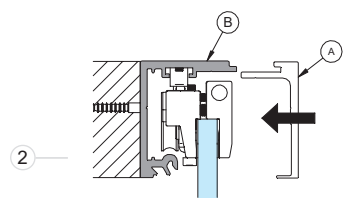
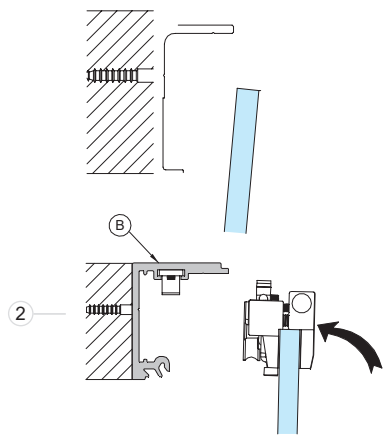
System Assembly

ANTI-SHOCK
RETAINING STOPPER

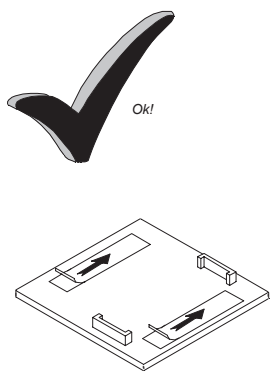
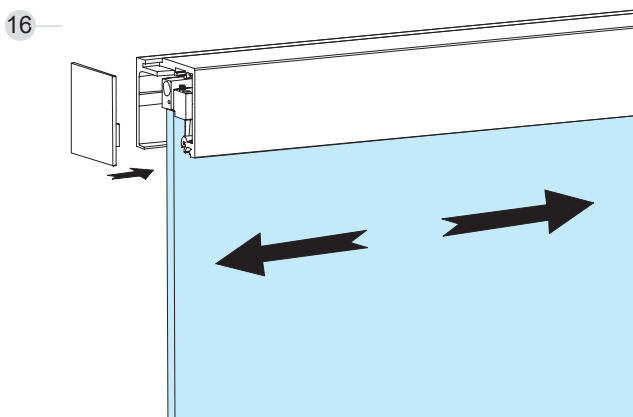
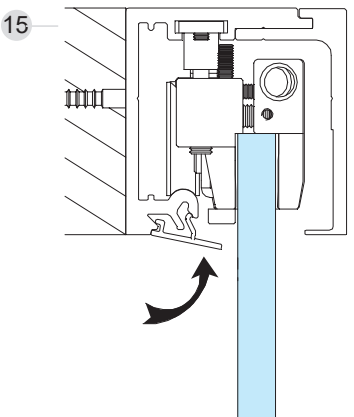
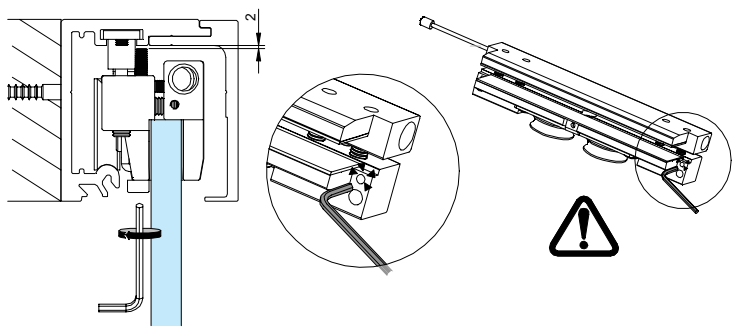


11 Mounting choose a way: 1 or 2

12

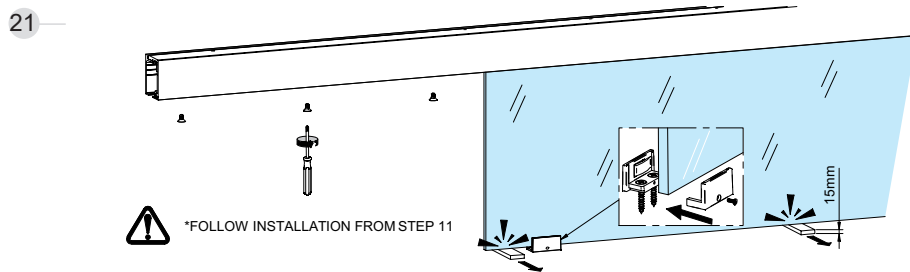
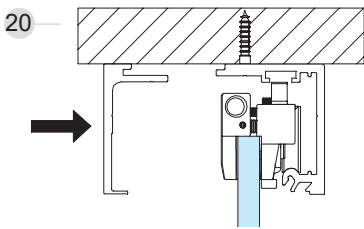
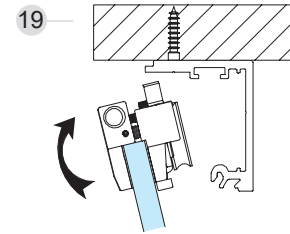
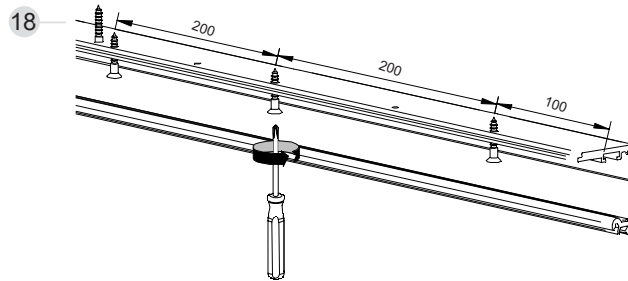
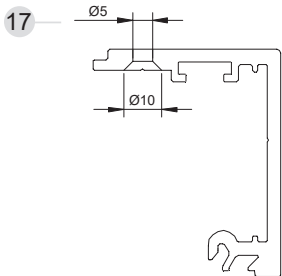


14 ANTI-DERAILMENT

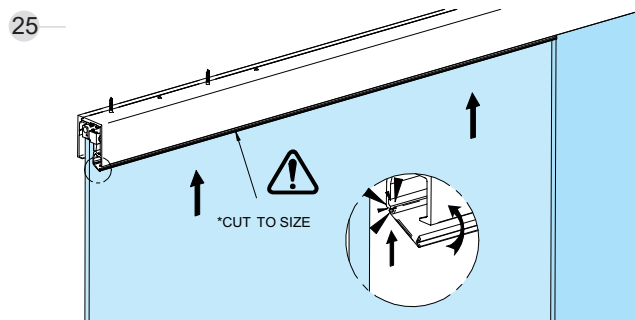
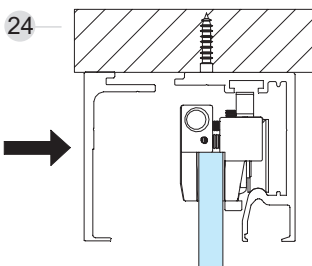
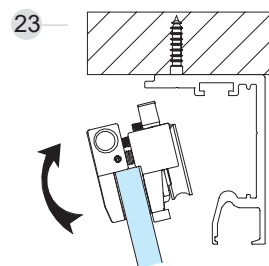
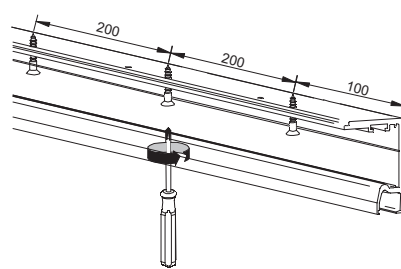
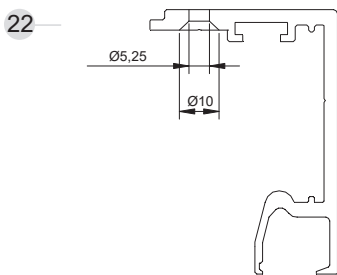


System Assembly

SV - X110 CEILING MOUNT



CGS-200 CEILING MOUNT WITH FIXED GLASS

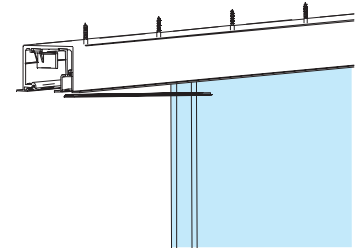
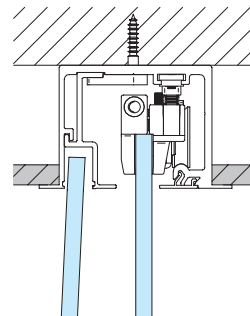
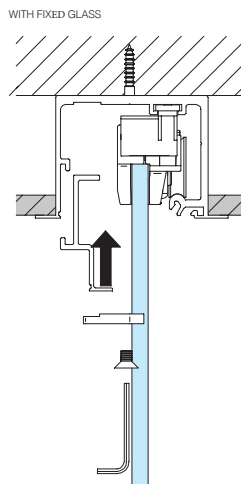
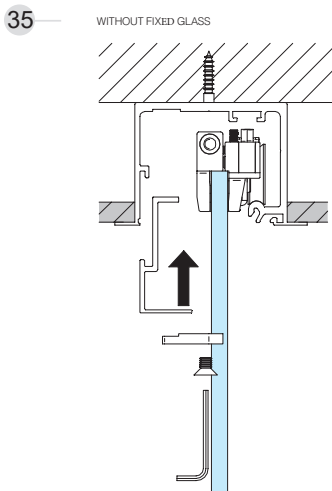
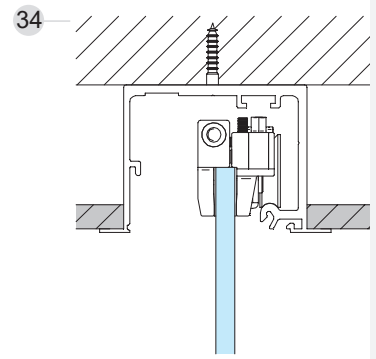
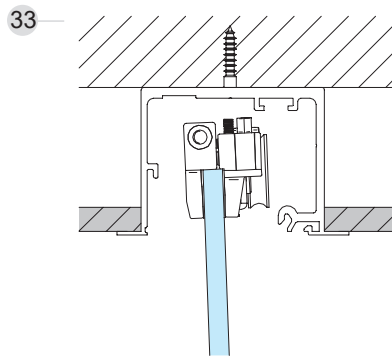
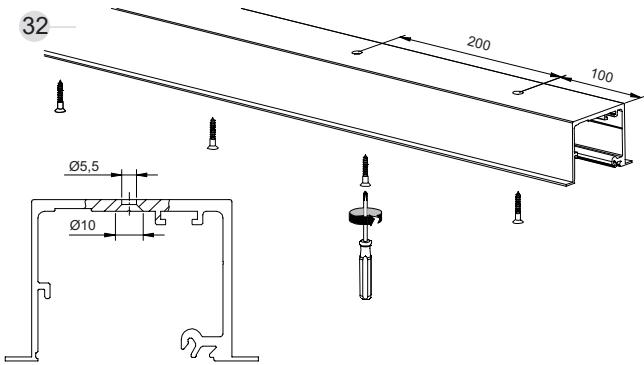


System Assembly

110 kg | 242 lb

CGS-200

FALSE CEILING MOUNT





ACCESORIO
FRAME
CGF300/350/400



110 kg | 242 lb



Crystalia Glass



ACCESORIO

CGF 300/350/400

CRYSTALIA Framed Sliding Glass Doors have a perimeter frame and horizontal or vertical decorative mullions. These add a new dimension and depth to the sliding doors. Framing is compatible with all systems from CRYSTALIA Sliding Door Family.

With the addition of the framing, you can transform your sliding glass doors that in turn will enhance the modern and minimalistic look of your residential or commercial space.

The system is suitable for glass panels 3/8" (10 mm) thick, with a door weighing up to 70-110 kg (154-242 lbs).

The system hardware comes in two finishes: black anodized aluminum and matte satin anodized aluminum. Glass finish options have no limitations.



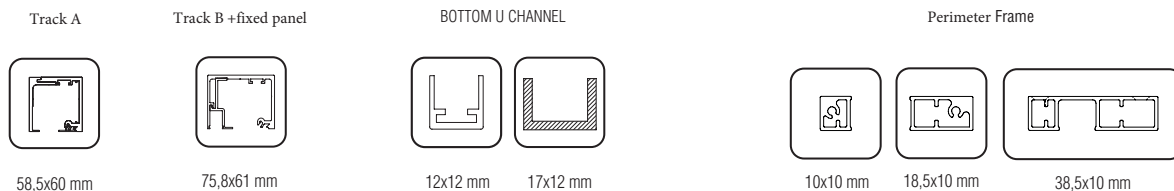
110 kg | 242 lb



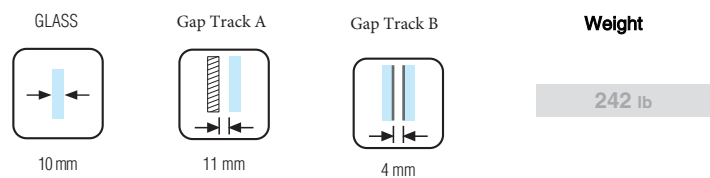


Pictograms I

Profiles I

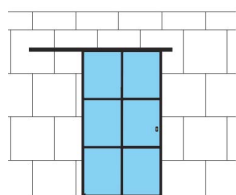


Specifications

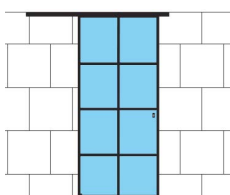


Installation possibilities

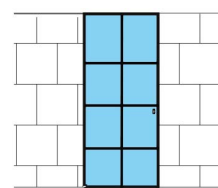
Wall Mount



Celling Mount



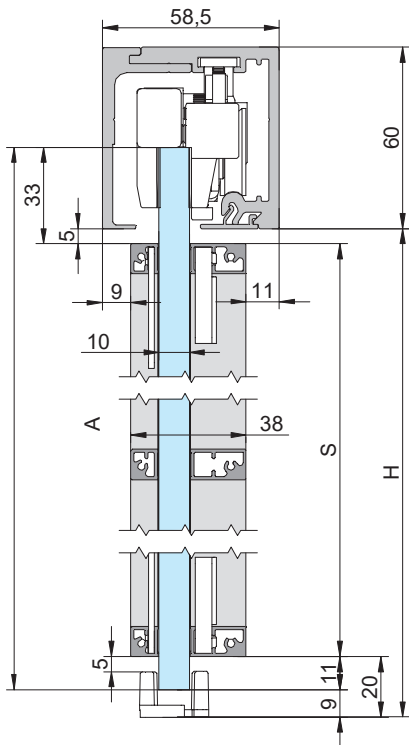
False ceiling mount



Wall mount

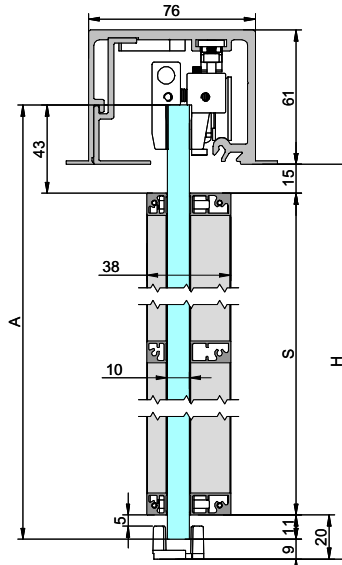
Ceiling mount

(Dimensions in mm)

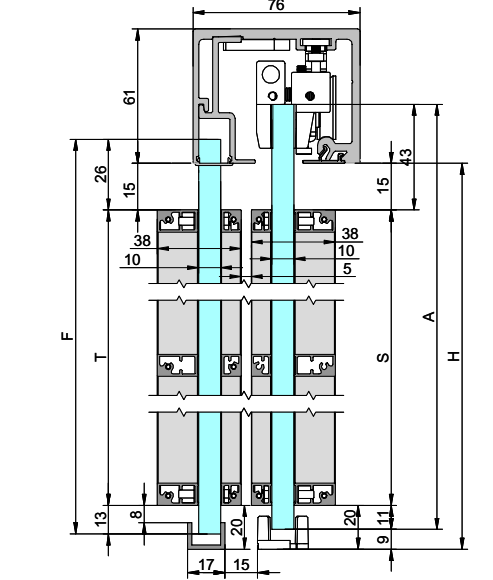


$S=A-44$ $A=H+17$

False ceiling filling

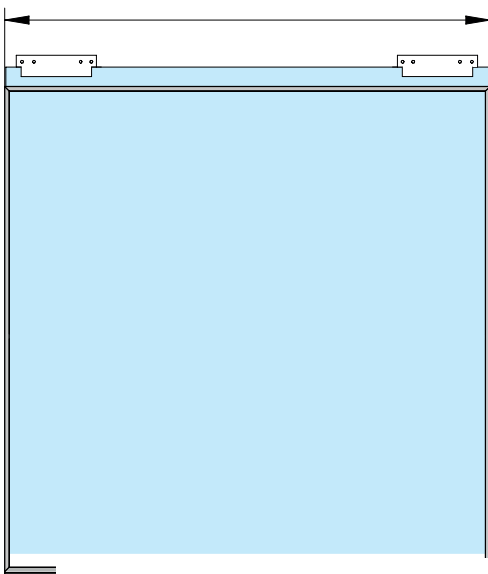


$S=A-54$ $A=H+17$



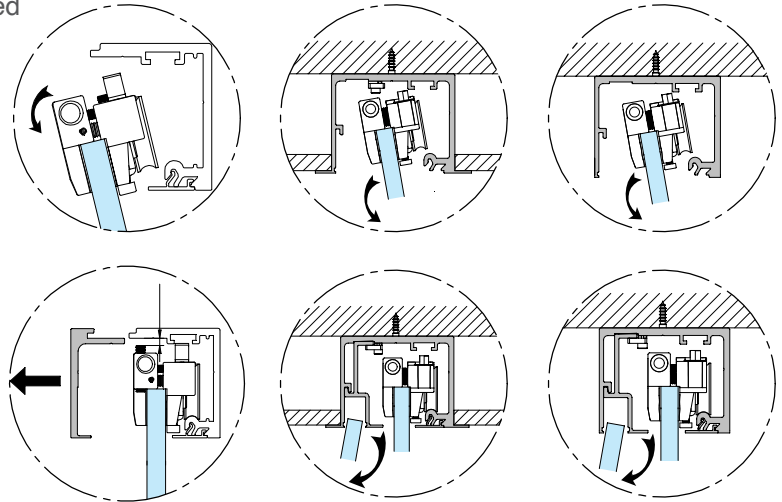
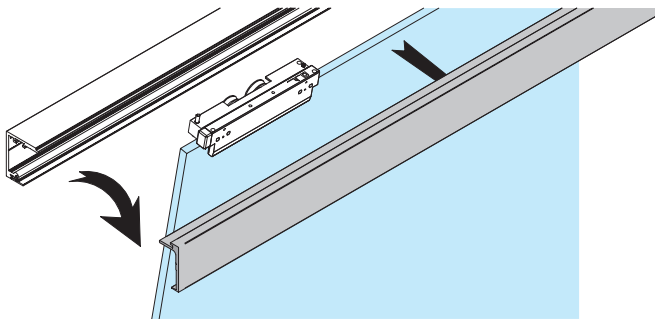
$F=H+6$ $A=H+17$ $S=A-62$ $T=F-39$

Total length = glass length + 3mm

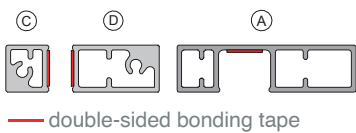
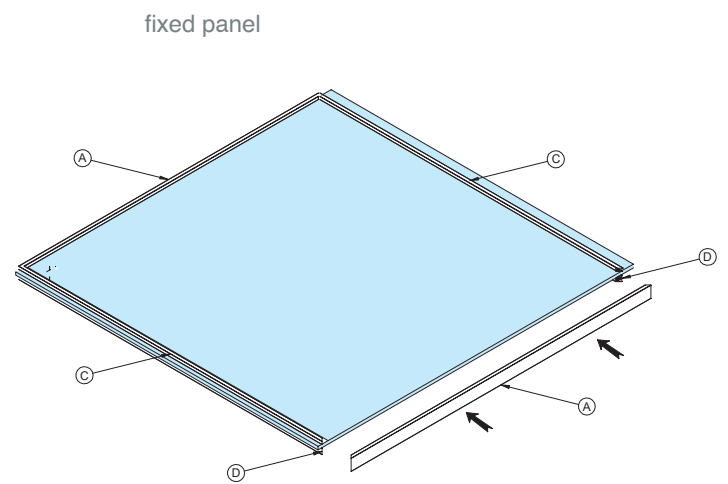
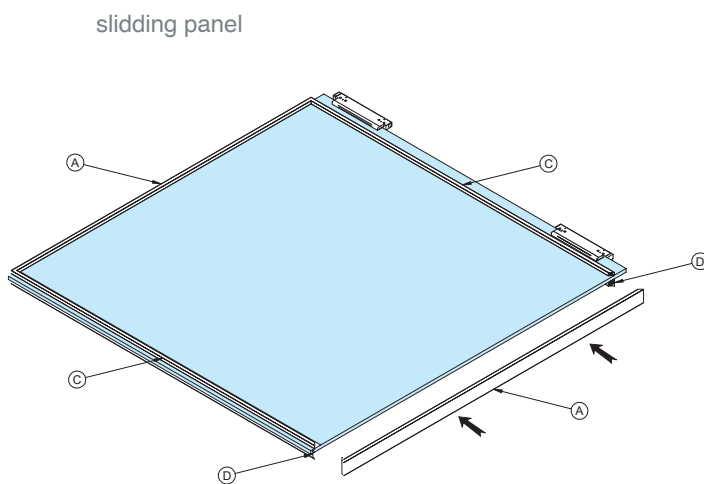
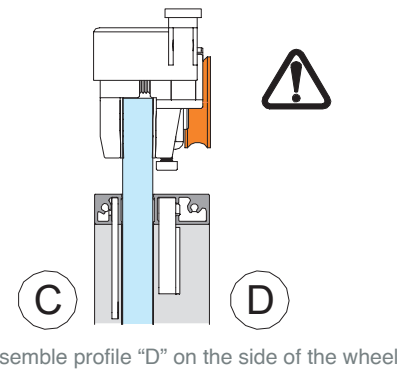
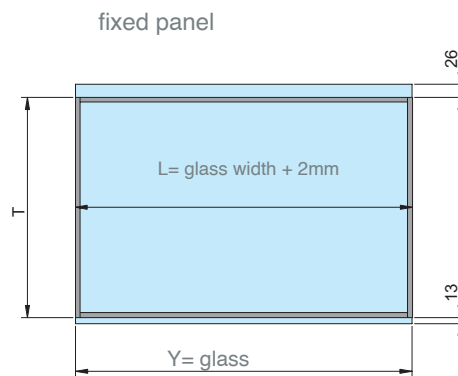
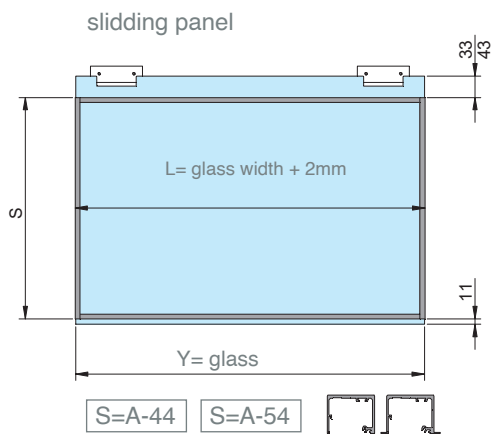


Installation Process

1 — Disassemble once the regulation has been completed



2 — Perimeter frames installation

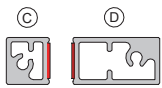
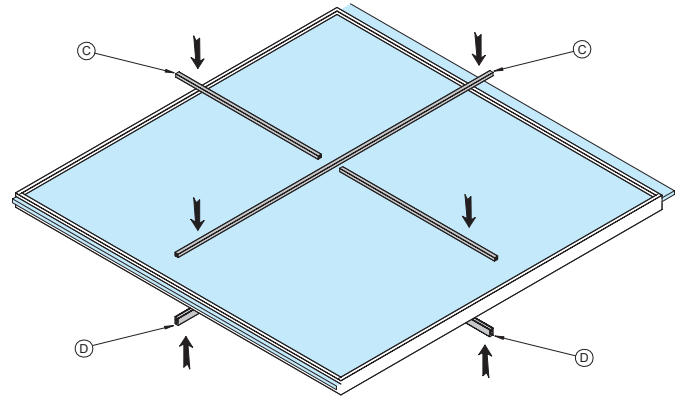
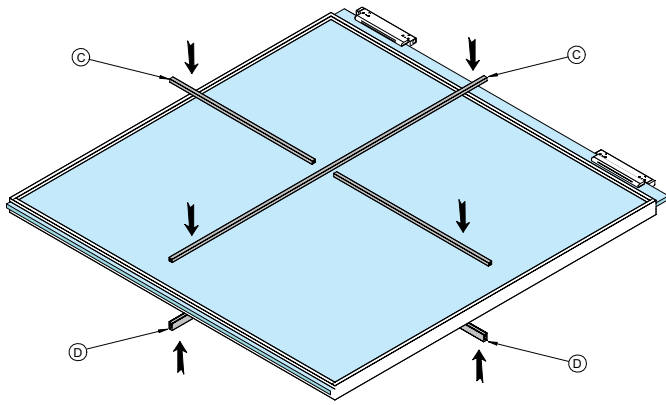




3 — Internal mullions assembly

Sliding panel

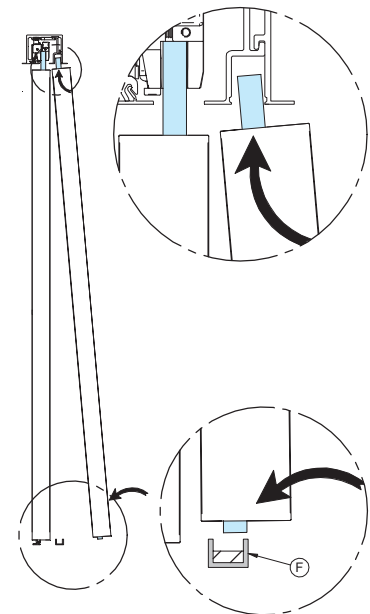
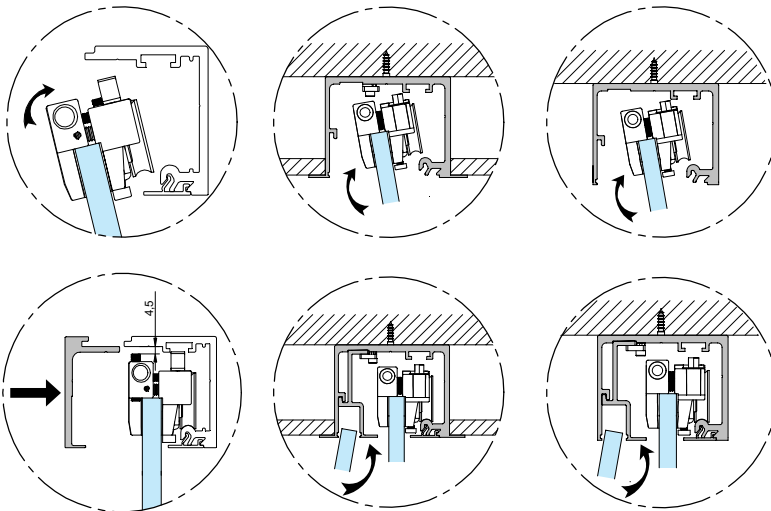
Fixed panel



— double-sided bonding tape

4 — Final assembly

5 — Fixed panel installation



6 — Guide installation

